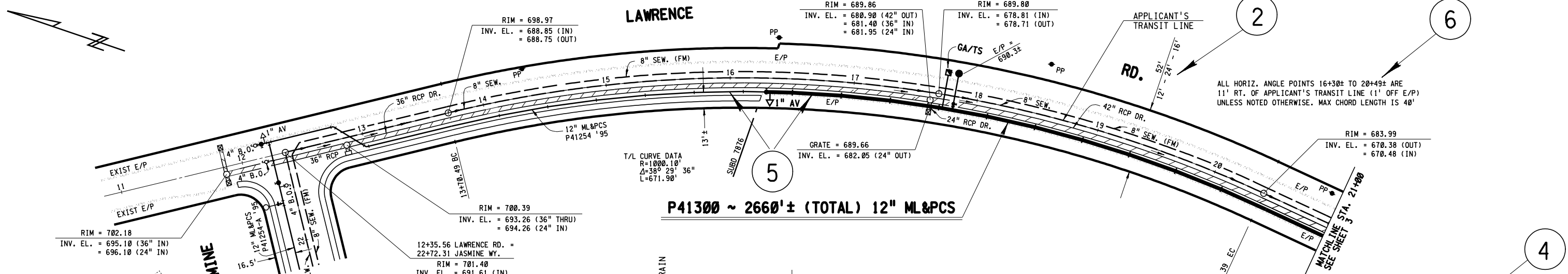
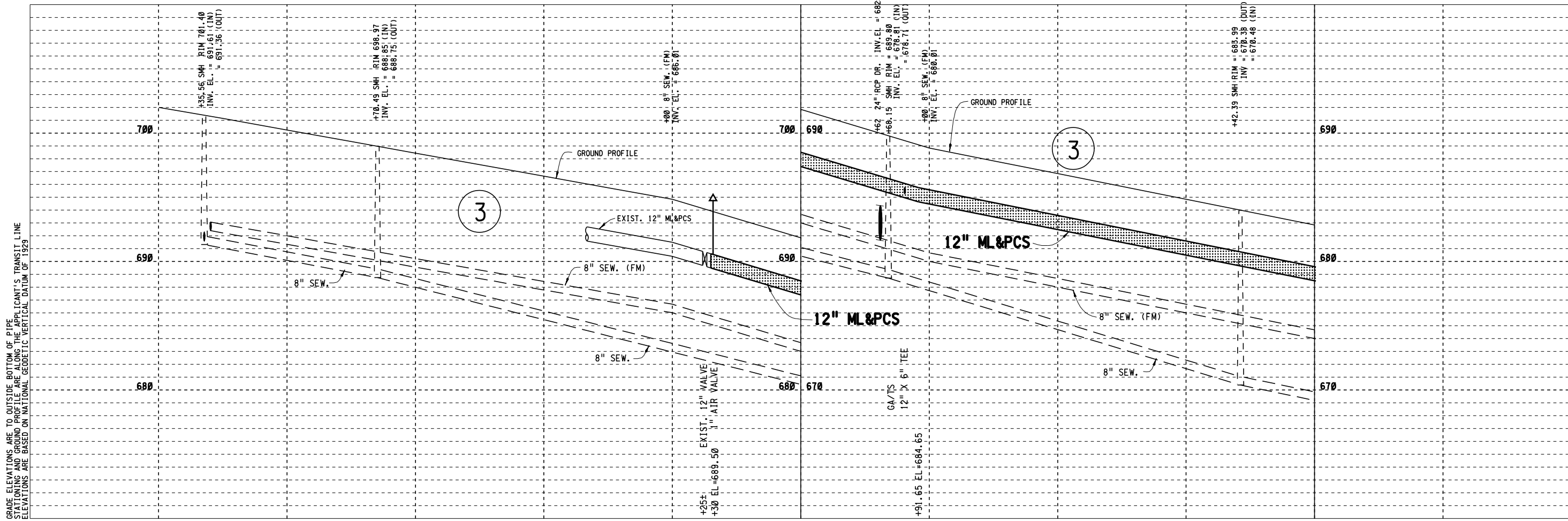


GRADE ELEVATIONS ARE TO OUTSIDE BOTTOM OF PIPE
STATIONING AND GROUND PROFILE ARE ALONG THE APPLICANT'S TRANSIT LINE
ELEVATIONS ARE BASED ON NATIONAL GEODETIC VERTICAL DATUM OF 1929



P41300 ~ 2660'± (TOTAL) 12" ML&PCS

SAMPLE
DESIGN
DWG. WITH
PROFILE

P41300

- CONN. TO EXIST. 12" VALVE
- TAP FOR 1" AIR VALVE DWG 189-EA, FIG B
- SINGLE FIELD CUT @ 2 1/4° ±, (HORIZ)
- SINGLE FIELD CUT @ 2 1/4° ±, (HORIZ)
- SINGLE FIELD CUT @ 2 1/4° ±, (HORIZ)
- SINGLE FIELD CUT @ 2 1/4° ±, (HORIZ)
- INSTALL OVER 24" RCP DRAIN
- SINGLE FIELD CUT @ 2 1/4° ±, (HORIZ)
- GALVANIC ANODE WITH TEST STATION DWG 286-EA, FIG A-Y-2 LEDGER NO. 0555-0321
- 12" X 6" TEE HYD. ORDER NO. _____
- SINGLE FIELD CUT @ 2 1/4° ±, (HORIZ)
- SINGLE FIELD CUT @ 2 1/4° ±, (HORIZ)
- SINGLE FIELD CUT @ 2 1/4° ±, (HORIZ)
- SINGLE FIELD CUT @ 2 1/4° ±, (HORIZ)
- SINGLE FIELD CUT @ 2 1/4° ±, (HORIZ)
- SINGLE FIELD CUT @ 2 1/4° ±, (HORIZ)

USER: dreyes
PLOT DATE: 22-JUN-2009 14:22
FILE: H:\general\sewer\l\sewerul1.dgn

NO.	DATE	REVISION	BY	REC.	APP.

DESIGNED BY	DESIGN CHECKED BY	EAST BAY MUNICIPAL UTILITY DISTRICT OAKLAND, CALIFORNIA
DRAWN BY	(W. CRONE)	
CORROSION CHECK BY		LAWRENCE RD., DANVILLE
		12" ML&PCS PIPE INSTALLATION
RECOMMENDED SR. CIVIL ENGINEER R.P.E. NO. C 36285		STRUCTURE OR ZONE DESIGNATION F7E
APPROVED MGR. OF DESIGN R.P.E. NO. C 39851		SCALE 1"=40'H.(1:480), 1/4"=4'V.(1:48)
DATE		W-8081-2